

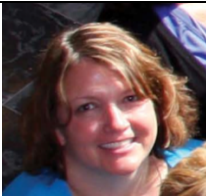
Kansas Early Years Online Modules Combined with an Onsite

Module 2 - Acknowledgements

Module Authors: Turnbull, A., Kyzar, K., Kemp, P., & Lindeman, D. (2013). *Kansas Early Years Module 2: Evidence-based-decision making*. University of Kansas, Kansas Early Years.



Teresa Schleif is the mother of five beautiful children, Savannah, Cheyan, Izac, Sahara, Carmelitta, and Lily. She and her husband Matt enjoy family events and any excuse for spending time with their children.



Peggy Kemp, has worked in the field of early childhood since 1984 and specifically in the field of early intervention since 1997. During this time she has held a variety of local and state leadership positions to include early childhood special education teacher, state Part C coordinator, and state technical assistance provider. These positions afforded her opportunity to work on a number of early childhood initiatives to include children and families with and without special needs. Peggy's areas of specialization are early intervention, infant mental health, families and policy.



Mary Schulte just began her 31st year at the Early Education Center in Hutchinson, Kansas. Mary is an Early Childhood Special Educator and Developmental Specialist. Mary has witnessed the growth of the field of early intervention and has embraced the emphasis on support of families that has evolved. Mary spends her days in homes, child care centers, and other community places where infants and toddlers and their families spend their days. Mary describes herself as adaptable, resourceful, and optimistic.



Janice Fialka has two children, Micah and Emma. She is a social worker, author, and active in the disability justice movement. Micah is one of the new wave of adults with intellectual disabilities who has attended college. You can learn more about Janice and Micah's work by linking to <http://www.danceofpartnership.com> and <http://www.throughthesamedoor.com>.



Rud Turnbull is the husband of Kansas Early Year's co-developer, Ann Turnbull. Rud is the father of three children – his oldest son, Jay, had multiple disabilities and had a very wonderful life until his untimely death at the age of 41. Jay transformed Rud's law career from being a corporate lawyer to being a professor of special education specializing in disability policy. To read Rud's memoir about Jay's life and death, [click here](#).



Sharilyn McGee is the proud mother of De'ja who is a junior in high school. As a single mother, she has raised De'ja to earn good grades and participate actively in artistic performances in their local community. After working in home health care and custodial services, Sharilyn is currently preparing to be a cosmetologist. She is an active member of her church and Alcoholics Anonymous.



Mike Wehmeyer is professor of Special Education: Director, Kansas University Center on Developmental Disabilities and Associate Director, Beach Center on Disability, all at the University of Kansas. Mike's research and model development efforts pertain to the education and support of youth and adults with intellectual and developmental disabilities.



Bobara Broce is mother and proud grandmother of the Broce family. She and her husband, Alberto, live in Florida. Bobara has over 40 years of experience as an Occupational Therapist with most of her career spent working with children. She was already working with infants and toddlers and their families when Part H (now Part C) of IDEA was enacted. Bobara describes herself as "Willing to laugh at myself", she prefers the scenic route of life rather than the expressway, and as a confirmed people watcher she is always fascinated by people.



Ann Turnbull has been a professor, teacher, researcher, and advocate for individuals with disabilities, their families, and service providers for more than 35 years. In 1988, she was the co-founder of the Beach Center on Disability which is a vital hub of national and international research and development on contemporary issues impacting the quality of life for individuals with disabilities and their families. In 1999, she was selected as one of 36 individuals who "changed the course of history for individuals with intellectual and developmental disabilities in the 20th century." In addition to her professional credentials, she is the parent of three children, one of whom, Jay (1967-2009), was an adult son with multiple disabilities who had what Ann describes as an "enviable life" in terms of his inclusion; productivity; and contributions to his family, friends, and community.
